

PUBLIC ART | ART WALK CONCEPT 899 MAINE AVENUE



PUBLIC ARTIST



MY LY | PRINCIPAL DESIGNER | ARTIST

MY LY DESIGN A woman-owned, minority-owned **CBE** certified urban design, public art, placemaking, architectural and interior design practice in Washington, DC.

MLD serves public and private sector clients on award winning projects in mixed-use developments, cultural arts, streetscapes, parks & open space, corporate office, residential, campus planning, higher education, K-12 schools, transit-oriented developments and community engagement.

www.mylydesign.com

WE ARE YOUR LOCAL MULTIDISCIPLINARY DESIGN PARTNERS THAT STRIVE TO PROMOTE EXCELLENCE, EQUITY, DIVERSITY, AND A SENSE OF COMMUNITY IN OUR PLACEMAKING WORK.

SW NEIGHBORHOOD PLAN

My Ly has been instrumental in helping shape neighborhood plans throughout the District with the DC Office of Planning on multiple Small Area Plans. She was the project manager and senior designer with the consultant team for the SW Neighborhood Plan. The plan established guidelines and set Arts and Cultural goals for new developments. Her work on OP's Ward 5 Industrial Land Transformation Plan and the West Virginia Ave DPW Campus Plan both identify public art as key elements in building community fabric. This experience will be leveraged to inform the public art proposal at 899 Maine Avenue.

West Virginia Avenue DPW Campus Master Plan

Washington, DC



ROLE

My Ly (Consultant Senior Planner) - Strategic Visioning, Community Engagement, Graphic Design, Mapping, Report Work performed with ASG

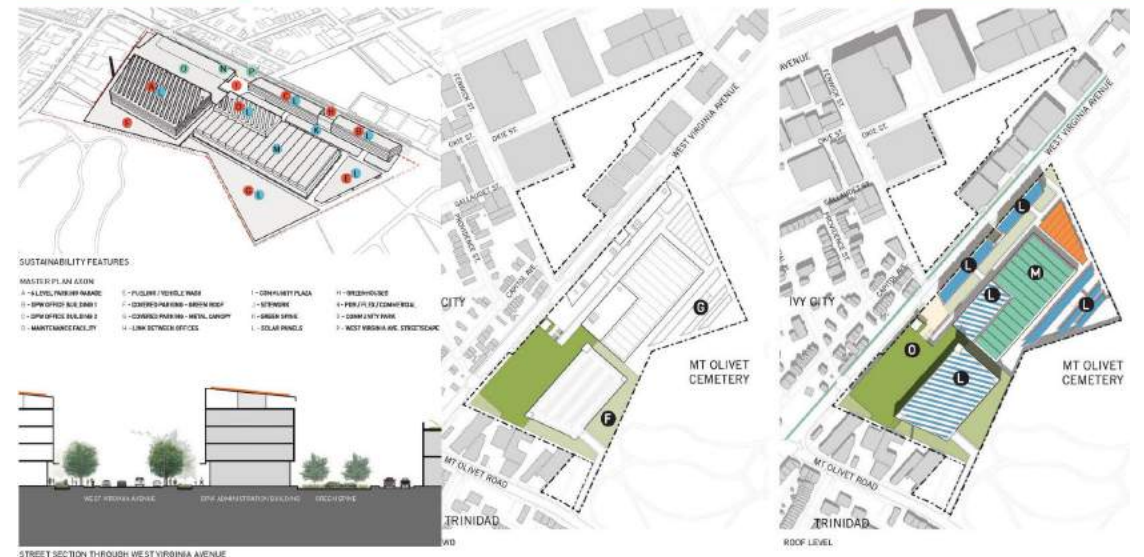
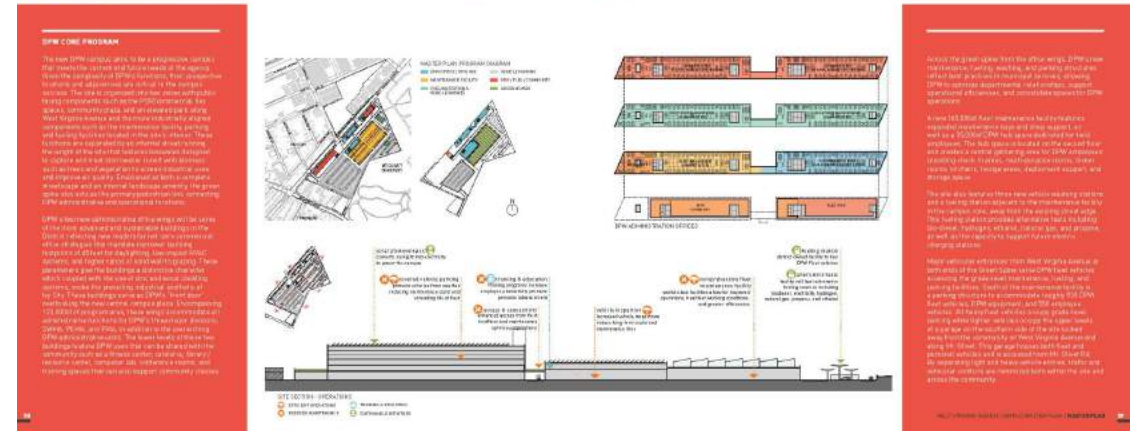
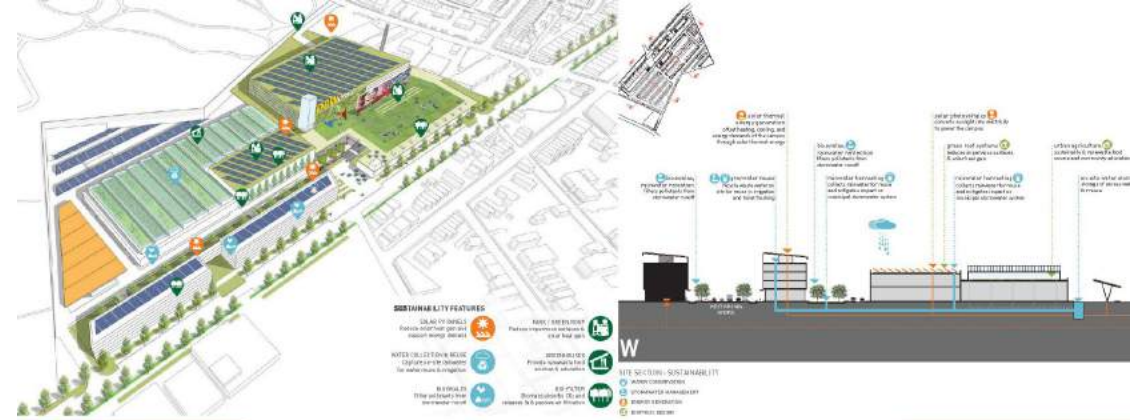
PROJECT DESCRIPTION

The campus will enhance community development and offer public arts and cultural amenities in Ivy City incorporating municipal and PDR uses. Maximizing this location will also mean integrating street-level retail, public art and other community support spaces that make West Virginia Avenue a coherent art inspired streetscape with a continuous band of social and commercial activity—this is an especially critical point as the neighborhoods surrounding the DPW sites are largely underserved by retail and community services.

The project looks to consolidate the Department of Public Works functions from multiple sites into a world-class public works campus a long-standing goal of the District. The plan offers an extraordinary opportunity to enhance municipal service operations while revitalizing an underutilized limited district-owned industrial land. It will create a unique, venue for Washington DC to tap national trends in urban manufacturing and also bolster local production, distribution and repair (PDR) enterprises based in Ward 5 and the surrounding area. The study will accommodate current and future DPW programmatic needs in state-of-the-art facilities and create a model of sustainability and efficiency in operations and exemplary design of a public works facility.



MY LY DESIGN



West Virginia Ave Dept of Public Works Campus

Washington, DC



PROJECT DESCRIPTION

The project looks to consolidate the Department of Public Works functions from multiple sites into a world-class public works campus a long-standing goal of the District. The plan offers an extraordinary opportunity to enhance municipal service operations while revitalizing an underutilized limited district-owned industrial land. It will create a unique, venue for Washington DC to tap national trends in urban manufacturing and also bolster local production, distribution and repair (PDR) enterprises based in Ward 5 and the surrounding area. The study will accommodate current and future DPW parking, office and programmatic needs in state-of-the-art facilities and create a model of sustainability and efficiency in operations and exemplary design of a public works facility.

CLIENT

DC Office of Planning, DGS, DPW

PROJECT TYPE

Master Plan | Community Engagement

Work performed with ASG



PUBLIC ART & PARK DESIGN

My Ly Design offers experience in the design of several public art installations throughout the District including the recent design/build of the SW Lansburgh Park Improvements, two park murals and art installations in the SW Duck Pond.

Our expertise in placemaking, is shaped from over twenty five years of urban design, neighborhood planning, architecture and streetscape design. And our experience in community supported cultural art projects, stem from a strong agency and engagement process, where the art becomes a representation of the neighborhood context. The new public art at 899 Maine Avenue will establish an iconic focal point at a gateway location along the Maine Avenue corridor, and be a catalyst for the creation of a new art walk through the Southwest neighborhood.

SW Neighborhood Plan - Lansburgh Park Improvements

Washington, DC



PROJECT DESCRIPTION

Lansburgh Park was selected for Park Improvements. Project was lead by DGS & DPR, designed by My Ly Design and built by Kadcon in 2021. Park implementation included repair and rebuilding Steel Canopy Structures, new lighting, paving, play area, plantings, signage, mural art, game tables, grilling stations, drinking fountain and seating.

Southwest Neighborhood Plan is a land use and urban design framework study realizing a robust, mixed-use community and the potential of underutilized public properties through a stakeholder engagement process. Through public workshops, strengths and challenges within the neighborhood were identified to develop a framework for future development. Recommendations include enhancing and connecting local arts and cultural sites, strengthening multi-modal transportation networks and improving community safety and pedestrian parks.

PROJECT OVERVIEW

Title: Lansburgh Park
Dimensions: 1 acre park
Medium: Various Mediums, Steel Fabricated Structures, Signage
Date: March 2021

ROLE

My Ly - Lead Artist, Park Designer, Steel Canopy Designer, Mural Painter, Community Engagement, Project Coordinator



Lansburgh Park - Entry Gateway Mural

Washington, DC



PROJECT DESCRIPTION

My Ly Design was selected as the artist for the Mural Wall to paint an original 50'x6' custom mural wall located at the entrance to Lansburgh Park. The once obscure park entrance is now a vibrant defined gateway with new lighting, park signage, plantings and colored concrete paving for public space events.

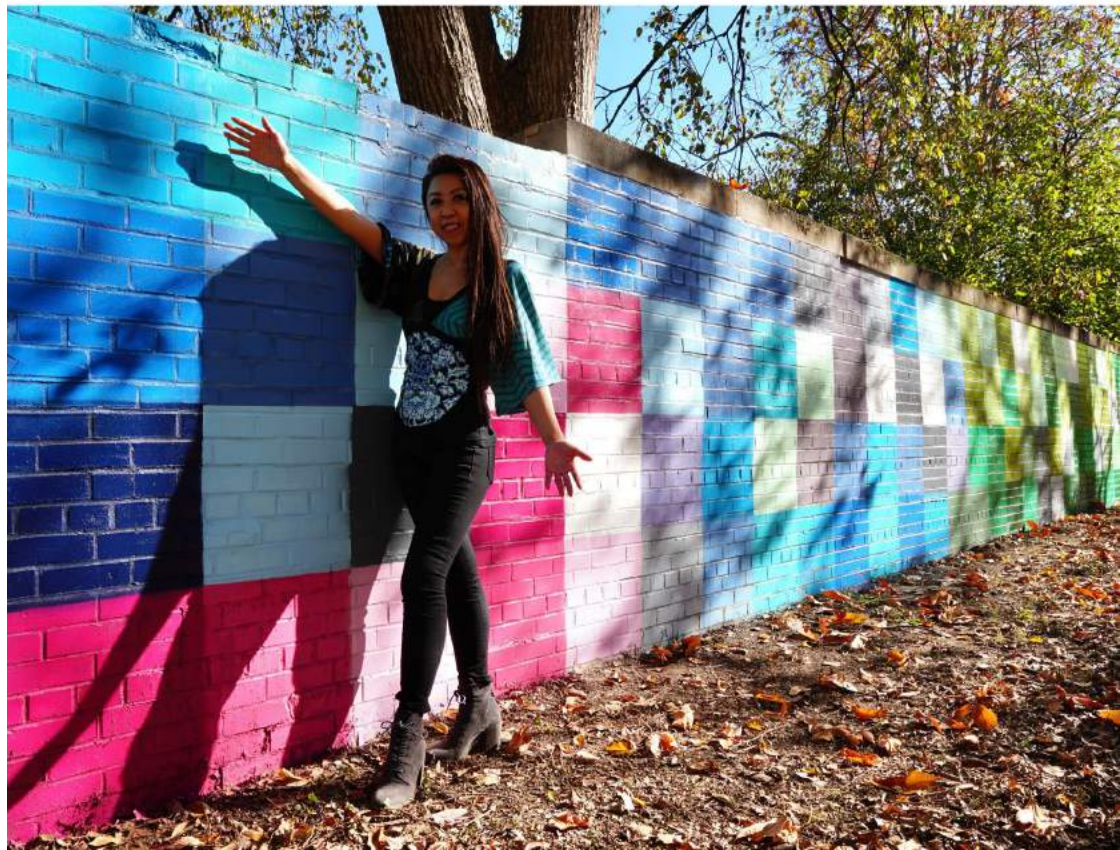
The art is a two-part series named Urban Blocks, inspired by the diverse and colorful interpretation of the urban city street grid. The colorful array of 136 blocks interlock and weave into the park where the colorful paving leads the eye to the second mural wall located in the middle of the park and the bold backdrop to a play area with climbable sculptures. The mural installations have transformed the urban walls into a fun place where visitors, families and community members take photos, walk through the park or share a smile.

PROJECT OVERVIEW

Title: Urban Blocks
Dimensions: 50'W x 6'H
Medium: Spray Paint on Brick Wall
Date: November 2020

ROLE

My Ly - Lead Artist, Art Designer,
Mural Painter, Community
Engagement, Project Coordinator



Underpass Vision Plan - Capitol Riverfront BID

Washington, DC



PROJECT DESCRIPTION

The Capitol Riverfront BID with stakeholder partners curated a vision plan for improvements to the New Jersey Ave and 2nd St underpasses as a first step towards improving the entire network of I-695 underpasses between New Jersey Ave SE and 8th St SE. Project goals include, transforming the current edge condition of the 695 Underpasses into revitalized gateways & welcoming entry points for pedestrian & vehicular access. The guidelines will connect the unique characteristics of individual sites with a cohesive creative theme, activate underutilized sites for placemaking opportunities, leverage neighborhood assets connecting them to disjointed areas with vibrant art, lighting, wayfinding, accessibility, landscape design, and creative community serving programs, partner with stakeholders and the local community in the vision planning process.

CLIENT

Capitol Riverfront BID
Stakeholders - DPR, DDOT, ANC, CFA, Council Members, DCCAH, DMPED

ROLE

My Ly - Lead Designer | Vision Plan
Community Engagement | Public Arts | Activation | Community Building



Art In Bloom - Community Grid

Washington, DC



PROJECT DESCRIPTION

The National Cherry Blossom Festival hosted a community-wide visual arts exhibition, Art in Bloom. 25 artists were chosen to paint 26 oversized cherry blossom shaped fiberglass sculptures. The sculptures were displayed throughout all eight wards in the District of Columbia, Maryland's National Harbor and the Aurora Highlands and National Landing neighborhoods in Northern Virginia.

The design creatively weaves together the diversity of DC as an abstract quilt of the nation's capital city. The DC city street map is a symbol of strength encompassing a patchwork of colors and neighborhoods that connect communities together. This recognizable and iconic city grid celebrates the coming together of people and purpose in a sacred place at a special time, the annual Cherry Blossom Festival. Community Grid encourages conversation and interaction as viewers are invited to identify their own location as well as the placement of monumental landmarks throughout Washington, DC. The sculpture is currently on display at Adams Mill & Columbia Roads NW, DC.

PROJECT OVERVIEW

Title: Community Grid
Dimensions: 5'W x 5'H
Medium: Paint on Fiberglass
Sculpture
Date: March 2021

ROLE

My Ly - Lead Artist, Art Designer,
Mural Painter, Community
Engagement, Project Coordinator
Jaclyn Stallard - Artist, Mural Painter



SOUTHWEST NEIGHBORHOOD

Southwest is a neighborhood rich with historic charm and robust amenities from the Mid-century Modern Architecture and the prominent Heritage Trees to a thriving Town Center and an active Waterfront destination. Neighborhood assets also include a number of community cultural art destinations that connect to main corridors, parks and open spaces.

PARKS & OPEN SPACE - HERITAGE TREES



CULTURAL ART ASSESTS

-  899 MAINE AVENUE
-  ARTS & CULTURAL
-  PUBLIC ART / PLAZA
-  RETAIL CORRIDOR
-  PARK

SPY MUSEUM

BANNEKER PARK

ANTHEM

899 MAINE AVENUE

JEFFERSON FIELD

JEFFERSON MS
MILL CREEK PUD

WHARF RETAIL

7TH STREET

AMIDON FIELD

4TH STREET

DUCK POND

ARENA STAGE

4TH ST RETAIL

SW LIBRARY

G STREET

CULTURE HOUSE

RANDALL RECREATION CENTER

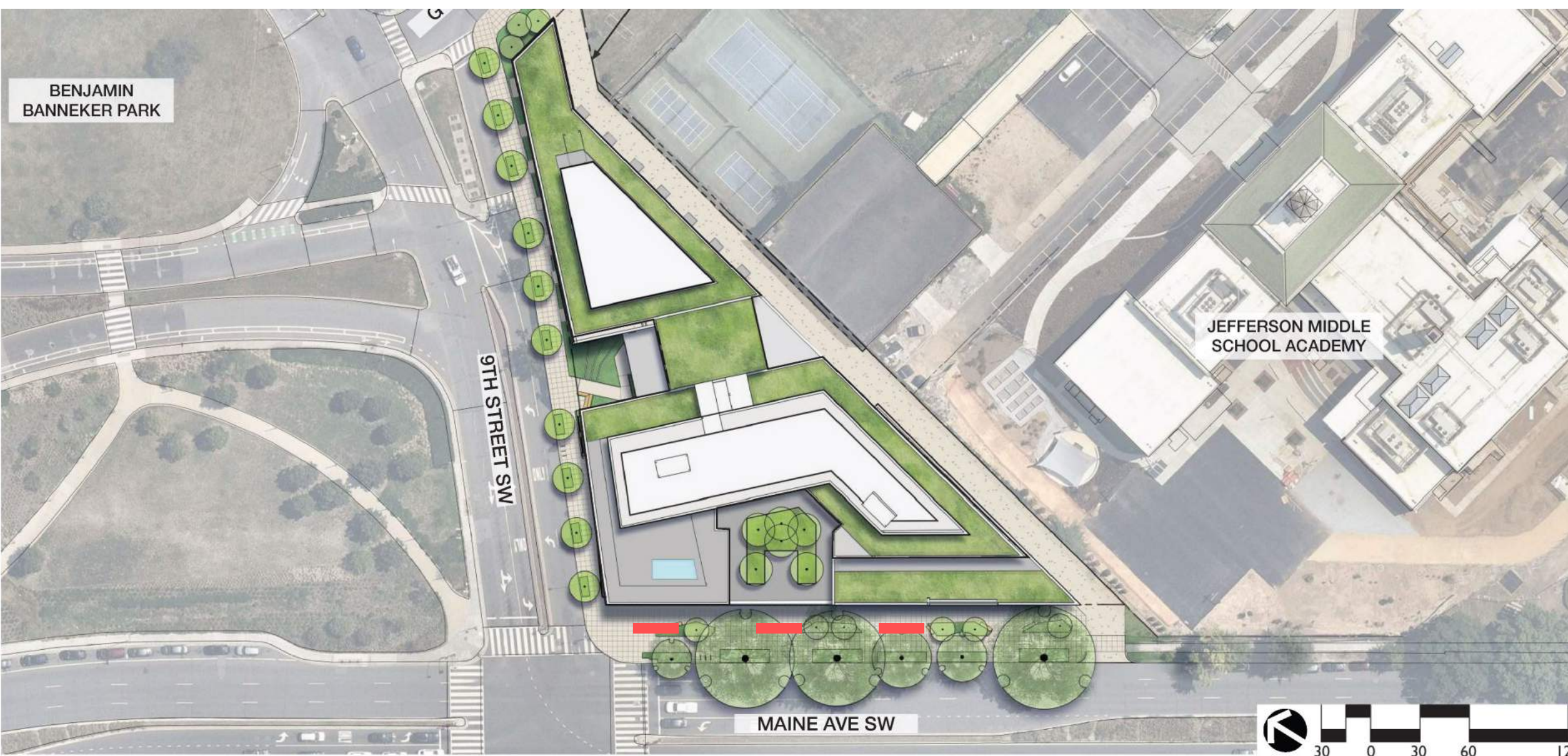
I STREET

LANSBURGH PARK

M STREET

MAKING THE PLACE

Our project is situated along Maine Avenue and 9th Street across from the entry to the Wharf development. On Maine Avenue, Heritage trees line the pedestrian sidewalk on one side and green space on the other. Our team will construct a series of simple abstract sculptures along Maine Avenue that are symbolic of a tree alley. The design of the sculptures is inspired by the heritage tree form that is well-known throughout Southwest, whether it's the trunk base, floating canopy or the silhouette shape. The art will be integrated with the landscape design, both on the development site and within adjacent public space, to feature seating and lighting elements as a vibrant gateway for day and night. The proposed sculptures will form an artistic node along what could become an Art Walk that is comprised of a series of existing and potential cultural / artistic destinations along I Street and Maine Avenue.



BENJAMIN
BANNEKER PARK

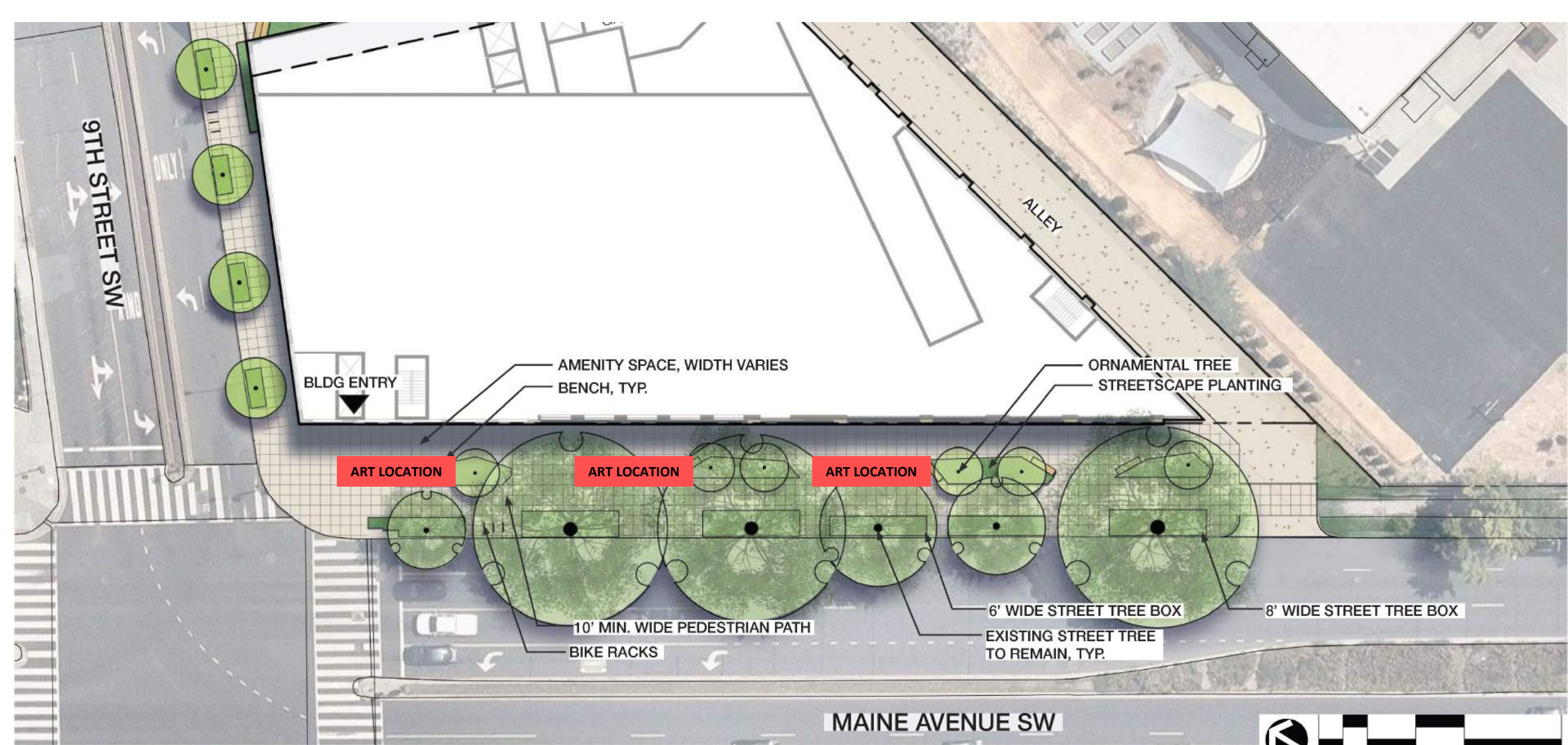
JEFFERSON MIDDLE
SCHOOL ACADEMY

9TH STREET SW

MAINE AVE SW



All improvements including public art, are subject to DDOT public space review and approval.



All improvements including public art, are subject to DDOT public space review and approval.



LAYERED LANDSCAPE / SEASONAL INTEREST



SEATING NODES



ENGAGING PEDESTRIAN EXPERIENCE

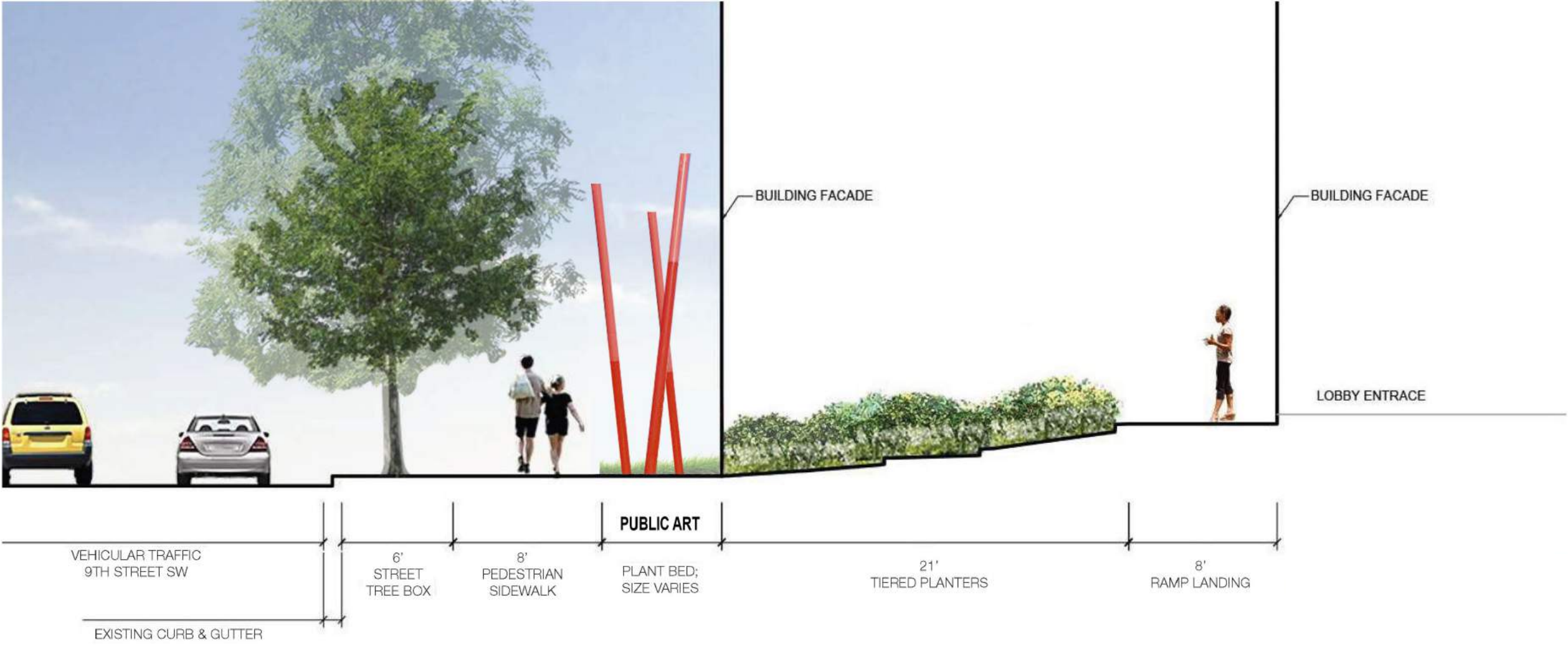


NATURAL FORMS



ACTIVATED POCKETS

All improvements including public art, are subject to DDOT public space review and approval.



All improvements including public art, are subject to DDOT public space review and approval.

VERTICAL FORMS



INSPIRATION_TREE TRUNKS

ORGANIC FORMS



INSPIRATION_TREE CANOPIES

ABSTRACT FORMS



INSPIRATION_TREE SILHOUETTE

CONTINUOUS FORMS



INSPIRATION_TREE HOUSE

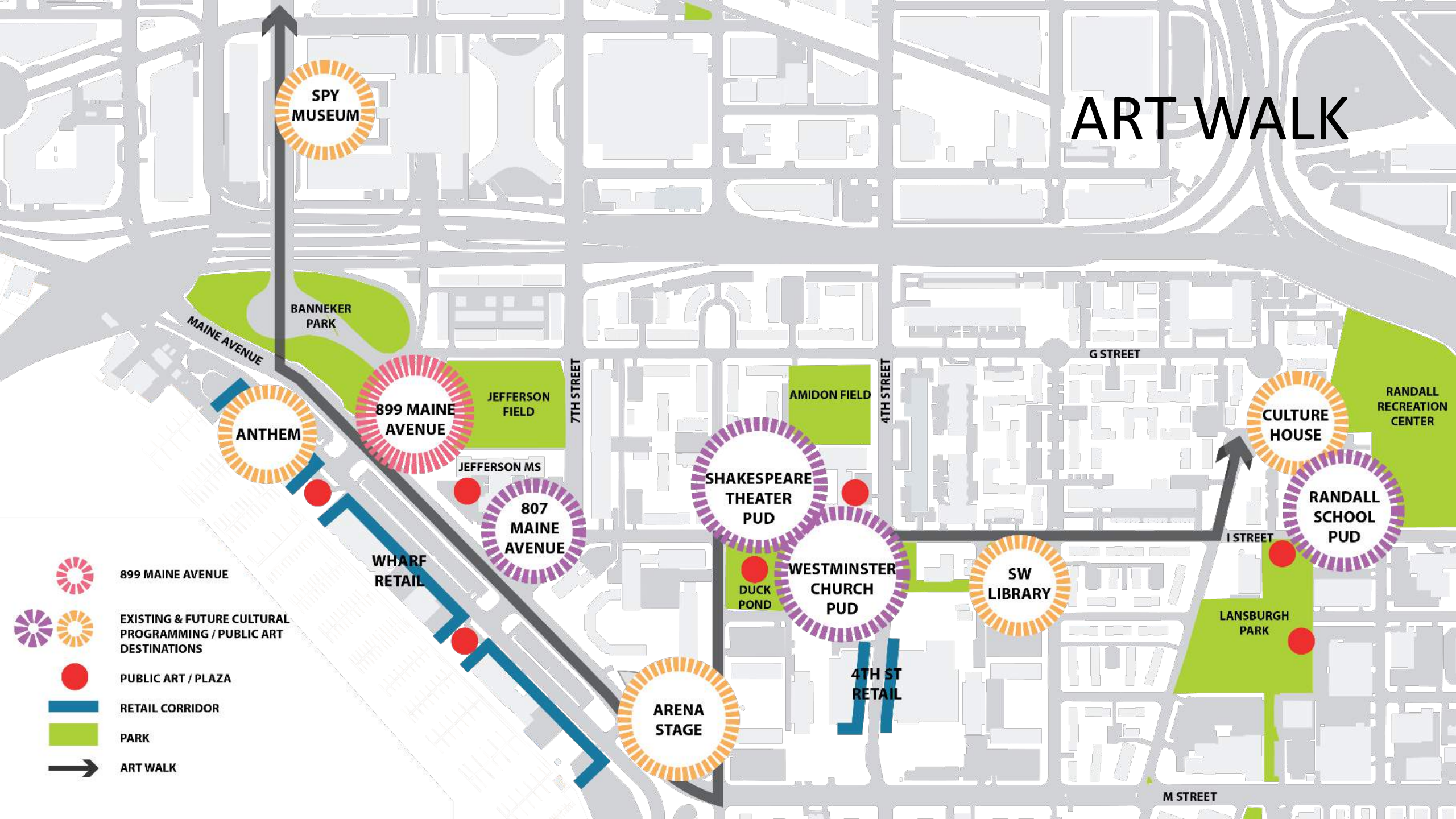
PLAYFUL PALETTES



ART WALK

The new Art Walk could creatively shape future development; enhance connections, open space and community amenities; and activate the overall pedestrian experience of the Southwest neighborhood.

ART WALK



SPY MUSEUM

ANTHEM

899 MAINE AVENUE

807 MAINE AVENUE

SHAKESPEARE THEATER PUD

WESTMINSTER CHURCH PUD

SW LIBRARY

CULTURE HOUSE

RANDALL SCHOOL PUD

ARENA STAGE

-  899 MAINE AVENUE
-   EXISTING & FUTURE CULTURAL PROGRAMMING / PUBLIC ART DESTINATIONS
-  PUBLIC ART / PLAZA
-  RETAIL CORRIDOR
-  PARK
-  ART WALK